

INSERTEK HARVESTER BLADES

AN INNOVATION TO THE SUGAR INDUSTRY



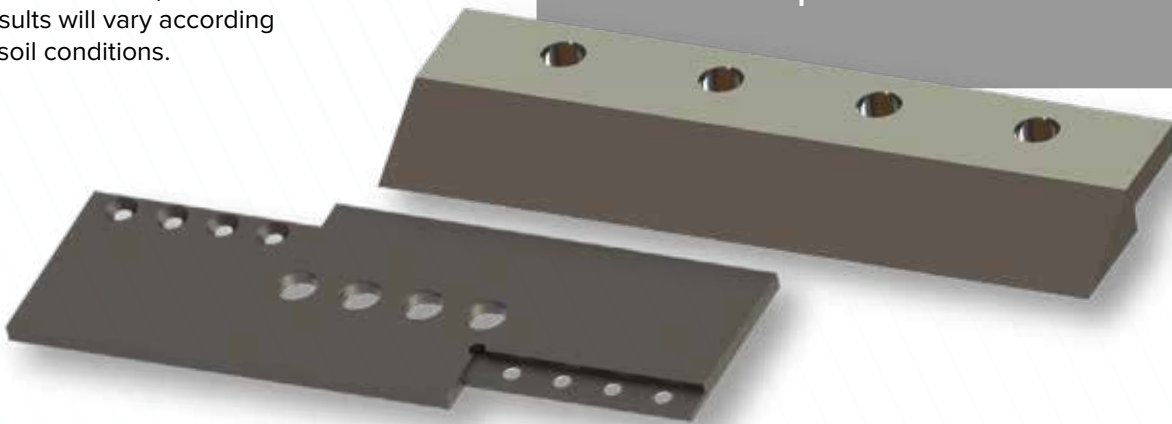
Benefits:

- ◆ Cost-Effective
- ◆ Reversible usable edges for a service life more than 4 times longer*
- ◆ Increased productivity
- ◆ Cutting edge insert hardness up to 60 HRC
- ◆ Decreased down time and labor
- ◆ Higher quality cut

*Based on tests performed. Results will vary according to soil conditions.

Crompton International developed a patent-pending design to outlast conventional blades 4 times or more*. Crompton International's Harvester Blades are made of a base body with interchangeable cutting edges that lengthen the blade's life cycle.

By providing high abrasion resistance, high impact toughness, and a superior edge retention, this innovative design will reduce down time for material replacement and decrease costs.



To find out more about how Crompton International's Harvester Blades can help increase productivity, longevity of the material and savings, contact us at 225-343-4219 and ask for a member of our Technical Services Team or email us at sales@cromption.com.